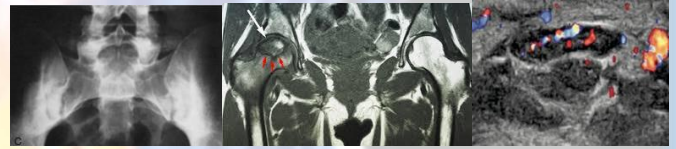




MUSCULOSKELETAL IMAGING (MSKI) in Clinical Practice



INSIDE OUT: IMAGING IN RHEUMATOLOGY

Sorrah Fiel R. Briones, MD, Mary Flor Joy Y. Edar, MD, Joenavin D. Ngo, MD, Lorieilyn A. Salvador, MD, Elbert DG. Mendez, MD, Daniel Ryan C. Castillo, MD



Intramuros, Manila – The University of Santo Tomas Hospital (USTH) Section of Rheumatology hosted another successful postgraduate course last 04 May 2019 at The Bayleaf Intramuros on the topic “**Musculoskeletal Imaging in Clinical Practice.**” The event was headed and facilitated by **Dr. Sandra V. Navarra**, course director and attended majority by Rheumatology consultants

(39%) and Rheumatology fellows (34%); likewise, Internists (23%) and Radiologists (4%) were present.

The scientific program focused mainly on 3 basic imaging modalities that aim to present its vital addition in making musculoskeletal disease diagnosis and management. The discussion flowed seamlessly showing relation between each imaging modality as well as its clinical correlation.

“What is your diagnosis?” is an

interactive question that engages the audience on the clinical diagnosis primarily based on the clues provided by the image presented.

The opening session facilitated by Drs. Sorrah Fiel R. Briones, Joenavin D. Ngo, and Mary Flor Joy Y. Edar

was an extensive discussion on variety of musculoskeletal conditions and associated radiographic findings. An appealing topic on the correct indication of

plain

radiograph, proper views to request and areas to look at are

the main interest of this session. Highly engaging **Prof. Tito P. Torralba, MD**, Rheumatologist and a former president and recipient of Masters



Award of the Asia-Pacific League of Associations of Rheumatologist (APLAR) joined by the only Radiology consultant in the faculty **Dr. Rafael S. Josen**, former Assistant Director of the Institute of Radiology in SLMC-QC, and the former Vice President of the Skeletal

MUSCULOSKELETAL IMAGING (MSKI) in Clinical Practice

12nn - 5pm
Saturday 04 May 2019
The Bayleaf Intramuros
Manila, Philippines

International Faculty
Dr. James Cheng-Chung Wei
Rheumatologist, Chung Shan Medical University of Taiwan

Radiology Society of the Philippines (SRSP) were our distinguished resource faculty. Characteristic radiologic images were presented from the earliest subtle change (i.e. erosions at 'bare areas')



chronic variation on articular and periarticular structures such as marginal and central erosions, loss of joint spaces, subluxations and dislocations, and 'arthritis mutilans'. Telltale "signs" and pathognomonic x-ray lesions ie. gull-wing and saw-tooth deformities of osteoarthritis, 'mouse ear' appearance, and 'ivory phalanx' in psoriatic arthritis, and 'dagger and trolley track' signs in ankylosing spondylitis were extensively introduced. Both our resource speakers Drs. Joson and Torralba emphasized the need for appropriate special



radiologic views like Norgaard's or "ball catcher's view" to provide better visualization of areas of interest. Differing location of radiologic

lesions and pattern of involvement ie. stages of sacroiliitis; confusing spinal ossification "phytes"-- syndesmophytes, osteophytes and flowing osteophytes and their keen distinction were likewise highlighted. Overwhelming and countless key learnings were shared by our facilitators and resource faculty but ending the session, Dr. Torralba imparted a valuable reminder that the foundation of making a correct diagnosis is still a comprehensive history and physical examination supplemented only by appropriate imaging procedures.

The participants were also enlightened after Dr. Joson's comprehensive lecture on "MRI 101," where he talked about



the practical need-to-know concepts of MRI for the non-radiologists. He ardently shared his expertise by providing the participants with numerous clinically significant and interesting images and animations. All ears and eyes focused on his presentation as he stimulated the minds of the attendees with his knowledge and vast MRI experience. The session opened with the basics of MRI sequence for the differentiation of musculoskeletal anatomy and ended with the participants' gaining ability to view concepts of the disease through imaging.

Following Dr. Joson's fascinating discussion is an encompassing presentation on MRI in correlation with different radiographic images facilitated by Drs. Leonid D. Zamora, Lorielyn A. Salvador, and Theresa M. Collante. The lecture focused on the basic pathology of muscles, ligaments, cortical bone, and fats such as ligament tear, joint effusion, avascular necrosis, Pott's disease, and several arthritides comparing appearances in different MRI sequence and views. Particularly pointed out that MRI an essential imaging in the timely recognition of early inflammatory changes not apparent by plain radiograph making early diagnosis possible. Our



international faculty **Dr. James Cheng-Chung Wei**, Director of Chung Shan Medical University of Taiwan (CSMUH) and member of the Editorial Board of International Journal of Rheumatic Diseases (IJRD), also shared his knowledge and joined the interactive discussion as resource speaker.



Making the most out of his expertise, Dr. CC Wei also had a specialized lecture on **"Imaging in the Spondyloarthropathies (SpA): Facts and**

Controversies". This further reiterated earlier presentations as he tackled generalities on SpA criteria, the clinical use of imaging, and practical guidelines. He underscored in his lecture that classification criteria were made for research and not for clinical diagnosis (for SpA is diagnosed based mainly on clinical features). His innovative way of



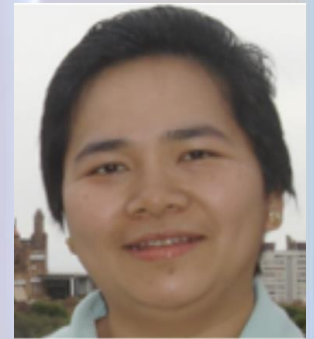
doing an interactive case based discussions showing an image while slowly spilling details of history surely captures everyone's attention. Diagnosis changes as he revealed information little by little, with this he quoted **"Medicine is a science of uncertainty and an art of probability"** by William Osler.

The final session was again an interactive case-based presentation of musculoskeletal ultrasound images correlated clinically. Co-presented by Drs. Francis Martin T. Cuenco and Katrina Joy C. Chua whereas expert panel consisted of **Dr. Juan Javier**

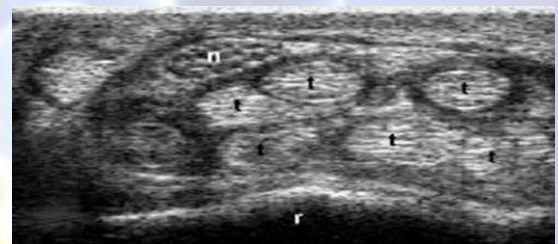


Lichauco, Department Chair of Internal Medicine and Chief of the Section of Rheumatology in SLMC-QC, and also a recipient of the Basic and Advance Musculoskeletal Ultrasound

Course certificate at the European League Against Rheumatism (EULAR), with **Dr. Millicent Tan-Ong**, Assistant Training Officer at the Section of Rheumatology in USTH, and also a recipient of Certification in Musculoskeletal Ultrasound Course. The lecture commenced with basic physics of ultrasound and its echogenicity, and further



reviewed the utility of US in a variety of musculoskeletal conditions and its advantages over other imaging modalities. Similarly, ultrasound imaging correlated clinically will largely aid physicians in arriving at a final diagnosis. Cases such as effusions, tendon tears, erosions, inflammations, carpal tunnel syndrome (CTS), enthesitis, and gout were presented exquisitely using images of US and actual patients. The session highlighted the comparable sensitivity and specificity of US to MRI in rotator cuff tears and its utility for carpal tunnel syndrome (CTS) as the best imaging modality. Dr. Tan-Ong also shared her awareness on the new ultrasound



criteria to accurately diagnose CTS. Dr. Lichauco further strengthened the use of ultrasound in detecting early

and grading synovitis as well as bone erosions, and monitoring treatment response.

A sunset symposium regarding updates in the management of spondyloarthropathies shortly followed and concluded the scientific sessions delivered by Dr. Juan Javier Lichauco and sponsored by Novartis Healthcare Philippines, Inc.

Overall, the conference provided highly educational materials and became a venue for reinforcement of knowledge on musculoskeletal disease through the use of imaging. A very generous audience commended the whole organizing faculty and staff for an interactive, informative programme with high yield topics. Majority of the participants regarded the event excellent and would likely support more upcoming sessions in the future.



Organized by Rheumatology Educational Trust Foundation, Inc (RETFI) in partnership with Philippine Rheumatology Association, we gratefully acknowledge the invaluable contribution of the faculty, fellows and staff in making this course achieve its learning objectives.

This course was made possible through an unrestricted educational sponsorship provided by Novartis Healthcare Philippines, Inc.

Musculoskeletal Imaging in Clinical Practice
 12 nn to 6 pm, Saturday 04 May 2019 • The Bayleaf Inbramuros, Manila, Philippines
 CPD units: 5 PRC · 3 PCP · 20 PMA · 10 PAFP Category II

PROGRAMME

Session	Faculty
12:00 nn	Registration
12:45pm	Introduction to the course
1:00 pm	What is your diagnosis? Interactive presentations of <i>x-ray</i> images, to correlate with <i>clinical</i> images Discussion Facilitator-presenters: Drs. Sorrah Fiel R. Briones, Joenavin D. Ngo, Mary Flor Joy Y. Edar Resource: Prof. Tito P. Torralba, MD , Rheumatologist, University of Santo Tomas, Manila, Dr. Rafael S. Josen , Radiologist, St. Luke's Medical Center, Manila
2:00 pm	"MRI 101" Practical need-to-know concepts for the non-radiologist Lecturer: Dr. Rafael S. Josen
2:30 pm	What is your diagnosis? Interactive case-based presentations of <i>MRI</i> images, to correlate with <i>x-rays</i> Facilitator-presenters: Drs. Leonid D. Zamora, Lonielyn A. Salvador, Ma. Theresa M. Collante Resource: Dr. Rafael S. Josen , Dr. James Cheng-Chung Wei , Rheumatologist, Chung Shan Medical University of Taiwan, ROC
3:30 pm	Break
3:50 pm	"Imaging in the Spondyloarthropathies (SpA): Facts and Controversies" Updates in SpA imaging Discussion Lecturer: Dr. James Cheng-Chung Wei
4:30 pm	What is your diagnosis? Interactive case-based presentations of <i>MSUS</i> images, to correlate with <i>clinical</i> images Discussion Facilitator-presenters: Drs. Francis Martin T. Cuenco, Katrina Joy C. Chua Resource: Dr. Juan Javier Lichauco , Rheumatologist, St. Luke's Medical Center, Manila, Dr. Millicent Tan-Ong , Rheumatologist, University of Santo Tomas, Manila
5:30 pm	The Final Round & Summary*

Chair - moderator: **Dr. Sandra V. Navarra**

Organized by
 Rheumatology Educational Trust Foundation, Inc.(RETFI) in partnership with Philippine Rheumatology Association

*Sunset symposium follows at 5:45 pm on "Updates in Management of Spondyloarthropathies" organized by Novartis Healthcare Philippines, Inc.